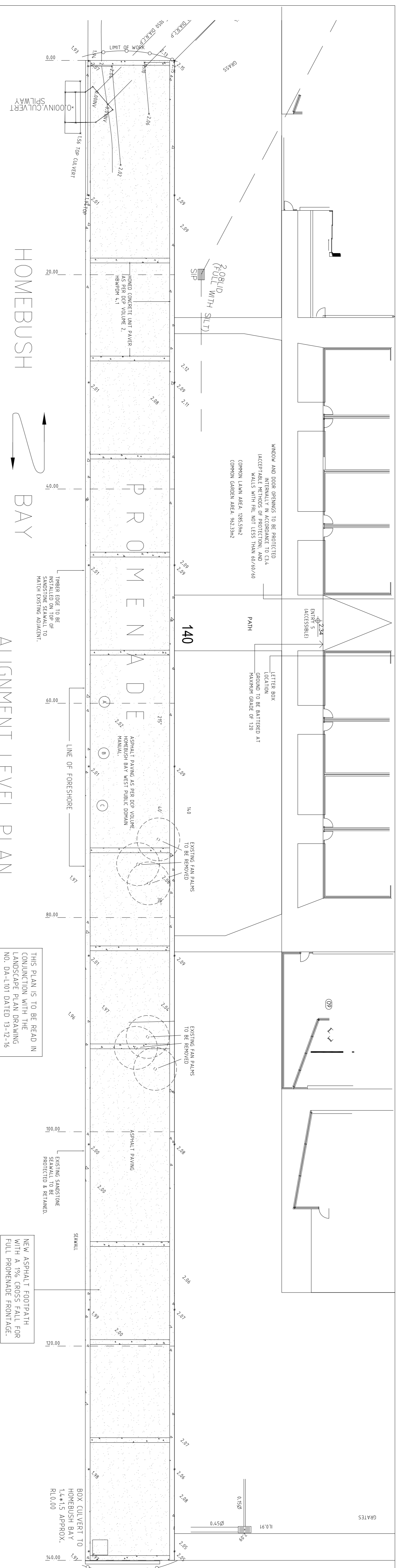


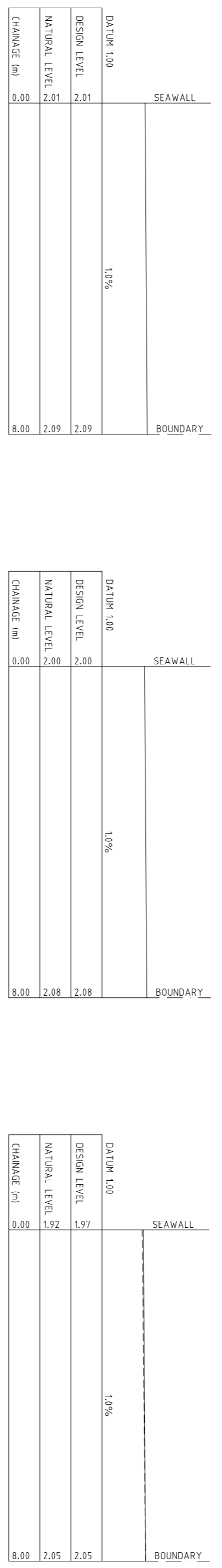
Revisions	



DATE	DESCRIPTION	BY	CHKD
13/12/16	ISSUED FOR CONSTRUCTION		
13/12/16	ISSUED FOR CONSTRUCTION		
13/12/16	ISSUED FOR CONSTRUCTION		

DATE	DESCRIPTION	BY	CHKD
13/12/16	ISSUED FOR CONSTRUCTION		
13/12/16	ISSUED FOR CONSTRUCTION		
13/12/16	ISSUED FOR CONSTRUCTION		

BOUNDARY LONG SECTION



CHAINAGE 40.00

CHAINAGE 100.00

CHAINAGE 140.00

EROSION CONTROL NOTES

1. ALL EROSION AND SILTATION CONTROL DEVICES ARE TO BE PLACED PRIOR TO THE COMMENCEMENT OF ANY CONSTRUCTION WORKS AND ALL SILT TRAPS ARE TO HAVE DEPOSITED SILT REMOVED REGULARLY DURING CONSTRUCTION.
2. ALL TREES ARE TO BE PRESERVED UNLESS INDICATED OTHERWISE ON THE ARCHITECT'S OR LANDSCAPE ARCHITECT'S DRAWINGS. EXISTING GRASS COVER SHALL BE MAINTAINED EXCEPT IN AREAS CLEARED FOR BUILDINGS, PAVEMENTS ETC.
3. INSTALL TEMPORARY SEDIMENT BARRIERS TO ALL INLET PITS LIKELY TO COLLECT SILT LAIDEN WATER. TO COUNCIL'S STANDARDS
4. NOT WITHSTANDING DETAILS SHOWN, IT IS THE CONTRACTORS SOLE RESPONSIBILITY TO ENSURE THAT ALL SITE ACTIVITIES COMPLY WITH THE REQUIREMENTS OF THE CLEAN WATERS ACT.

(B) GENERAL NOTES

1. ALL WORK TO BE CARRIED OUT IN ACCORDANCE WITH COUNCIL'S CIVIL CONSTRUCTION SPECIFICATION AND TO THE SATISFACTION OF THE DIRECTOR OF DEVELOPMENT.
2. ATTENTION IS DRAWN TO COUNCIL "TREE PRESERVATION ORDER" UNDER WHICH NO TREES ARE TO BE REMOVED OTHER THAN THOSE AFFECTED BY ROAD, LAND FILL OR CUT/UP DRAINAGE WORKS. COUNCIL'S SUPERVISING ENGINEER WILL DETERMINE WHETHER TREES ARE DEEMED TO BE AFFECTED BY THIS CLAUSE.
3. INSPECTION AND APPROVAL OF THE WORKS IS REQUIRED BY COUNCIL AT THE FOLLOWING STAGES
 - * WHEN DRAINAGE LINES HAVE BEEN Laid, JOINED AND BEDDED PRIOR TO BACKFILLING PAVEMENT MATERIAL. (SEE TESTING)
 - * WHEN PART HAS SPECIFIED BY COUNCIL'S SUPERVISING ENGINEER OF THE PAVEMENT DEPTH HAS BEEN INSTALLED. (SEE TESTING)
 - * AT COMPLETION OF PAVEMENT SHAPING AND CONSOLIDATION PRIOR TO PRIMING. (SEE TESTING)
 - * AT SEALING NOTE 24-HOURS REQUIRED BETWEEN PRIMING AND SEALING
 - * AT COMPLETION OF ALL WORK.
4. PAVEMENT TESTING TO BE CARRIED OUT AT THE FOLLOWING STAGES
 - * AT INTERMEDIATE LEVELS (IF REQUIRED BY COUNCIL'S SUPERVISING ENGINEER) - DENSITY AND ROLLER TEST.
 - * SUBGRADE - DENSITY AND ROLLER TESTS.

NOTE : A MIN 24 HOURS NOTICE IS REQUIRED FOR ALL INSPECTIONS.

1. THE ROLLER TESTS WILL BE CARRIED OUT BY COUNCIL'S SUPERVISING ENGINEER, USING A THREE POINT ROLLER (ALSO DESCRIBED AS A STEAM-ROLLER)
2. DENSITY TEST, BEAM TESTS AND CBR TESTS ARE TO BE CARRIED OUT BY A COUNCIL APPROVED NATA REGISTERED LABORATORY (BEAM TESTS ARE ABLE TO BE CARRIED OUT BY COUNCIL - CONTACT MAY BE MADE WITH COUNCIL'S PAVEMENTS ENGINEER FOR A QUOTE).
3. TEST RESULTS ARE TO BE SENT IMMEDIATELY TO THE COUNCIL'S SUPERVISING ENGINEER.
4. "STANDARD" COMPACTION TESTING TO BE USED
5. A THREE POINT ROLLER (ALSO DESCRIBED AS A STEAM-ROLLER), IN ACCORDANCE WITH COUNCIL'S CONSTRUCTION SPECIFICATION, IS TO BE USED ON ALL BUT THE NARROWEST SHOULDERS, FOR ROLLER TESTING

5. ANY ADJUSTMENT TO PUBLIC UTILITIES IS THE RESPONSIBILITY OF THE CONTRACTOR/DEVELOPER.
6. PUBLIC UTILITIES SERVICES (WATER, GAS, ELECTRICITY, TELEPHONE ETC.) REQUIRED TO BE INSTALLED IN CONJUNCTION WITH THE WORK, ARE TO BE INSTALLED PRIOR TO THE LAYING OF ANY ROAD PAVEMENT MATERIAL, AS ARE CONDUITS FOR BOTH PUBLIC UTILITIES AND INDIVIDUAL ALLOTMENT SERVICES.
7. A SMOOTH JUNCTION IS TO BE PROVIDED WITH EXISTING WORK.
8. UNSUITABLE MATERIAL IS TO BE REMOVED FROM ROADS AND LOTS PRIOR TO FILLING.
9. STRIP AND STOCKPILE TOPSOIL FROM ROADWAYS AND SITE REWARDING AREAS AND RE-SPREAD ON FOOTPATHS, BATTERS AND FILL AREAS TO A MAXIMUM DEPTH OF 300MM WITH A MINIMUM DEPTH OF 100MM.
10. DURING CONSTRUCTION NOTIFY THIS OFFICE IF ANY CURSES ARISE - NEVER ASSUME.
11. LIMIT OF CONSTRUCTION TO BE AS SHOWN ON PLANS.
12. ALL PAVEMENTS TO BE CONSTRUCTED IN ACCORDANCE WITH COUNCIL CONSTRUCTION SPECIFICATION.

THIS PLAN IS TO BE READ IN CONJUNCTION WITH THE LANDSCAPE PLAN DRAWING NO. DA-1-101 DATED 13-12-16

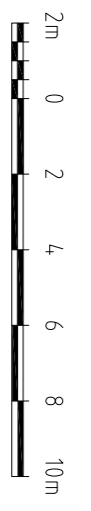
NEW ASPHALT FOOTPATH WITH A 1% CROSS FALL FOR FULL PROMENADE FRONTAGE.

(A) PRIOR TO COMMENCEMENT OF WORK THE CONTRACTOR SHALL

1. PRODUCE REGISTRATION/PERMITS FOR ALL PLANT TO BE USED ON THE ROAD RESERVE IN FOOTPATH
2. PRODUCE INSURANCES REQUIRED AS DEVELOPMENT CONSENT CONDITIONS.
3. HAVE SITE MEETING WITH COUNCIL'S DEVELOPMENT SECTION.
4. INSTALL SEDIMENT AND EROSION CONTROL DEVICES AND OBTAIN A COPY OF "URBAN EROSION AND SEDIMENT CONTROL - FIELD GUIDE" AS PUBLISHED BY CALM.
5. BE AWARE OF THE FOLLOWING:
 - * THESE NOTES DO NOT REPLACE THE NEED TO READ COUNCIL'S CONSTRUCTION SPECIFICATION.
 - * THE NEED FOR THE PROVISION OF A WORK-AS-EXECUTED PLAN AND SUPERVISION BY THE PERSON DOING THE WORK-AS-EXECUTED PLAN.
 - * TAKE SPECIAL NOTE OF THE ROLL KERB AND GUTTER PROFILE AND THE SPECIAL ROOF WATER OUTLET.
 - * ONLY PLASTIC GUIDEDROPS ARE TO BE USED, OF A TYPE APPROVED BY THE SHIRE ENGINEER.
 - * ERRORS AND OVSIGHTS ON PLANS ARE TO BE RECTIFIED AT THE SHIRE ENGINEERS DISCRETION.
 - * TEST RESULTS ARE TO BE SENT TO COUNCIL'S SUPERVISING ENGINEER IMMEDIATELY.
 - * PROPOSED VARIATIONS TO THE PLANS ARE TO BE REFERRED BACK TO COUNCIL FOR APPROVAL.
 - * THE CONTRACTOR SHOULD BE AWARE THAT IF HE PROVIDES THE MAINTENANCE BOND ON BEHALF OF THE DEVELOPER, THEN IF THIS IS THE ONLY BOND HELD, IT WILL BE USED TO GUARANTEE PERFORMANCE OF ALL WORK REQUIRED FOR THE DEVELOPMENT, REGARDLESS OF WHO WAS RESPONSIBLE FOR CARRYING OUT THE WORK.
 - 6. LOCATE ALL SERVICES WHETHER SHOWN ON THE PLAN OR NOT. THE CONTRACTOR SHALL BE RESPONSIBLE FOR ADJUSTMENTS AND REPAIRS TO SERVICES AND FOR ANY DAMAGE TO THOSE SERVICES.

LEGEND

	- EXISTING CONTOURS
	- SILT FENCING (REFER TO DETAIL BELOW)
	- FINISHED SURFACE LEVELS
	- EXISTING SURFACE LEVELS
	- CONCRETE PAVEMENT - DESIGN 10 TO BE IN ACCORDANCE WITH COUNCIL STANDARDS
	- BITUMEN PAVEMENT - DESIGN TO BE IN ACCORDANCE WITH COUNCIL STANDARDS



FOR D.A. ONLY
AUBURN CITY COUNCIL

DIAL 1100 BEFORE YOU DIG
NO SUBSURFACE INVESTIGATION HAS BEEN MADE
IT IS YOUR RESPONSIBILITY TO OBTAIN SERVICE
DIAGRAMS FROM RELEVANT AUTHORITIES

CLIENT
NICK MASSER

PROJECT
PROPOSED DEVELOPMENT
6-8 BAYWATER DRIVE,
WENTWORTH POINT

TITLE
ALIGNMENT LEVEL
PLAN

UNITED CONSULTING ENGINEERS PTY LTD
Civil/Structural Engineers

141-143 Lyons Highway,
Bundoora NSW 3083
Phone: 049 453 912
Facsimile: (02) 976 6222
Email: info@unitedce.com.au

141-143 Lyons Highway,
Bundoora NSW 3083
Phone: 049 453 912
Facsimile: (02) 976 6222
Email: info@unitedce.com.au

Scale: 1:200

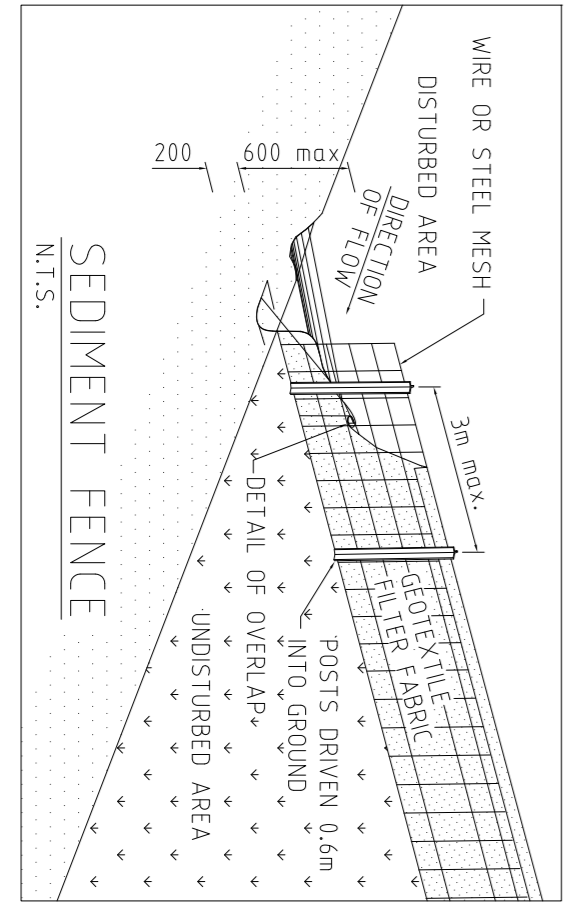
North Arrow

15/08/2017

Scale: 1:200

North Arrow

15/08/2017



TYPICAL FOOTPATH DESIGN

N.T.S.